

Intra-Application Partitioning of Personal Data

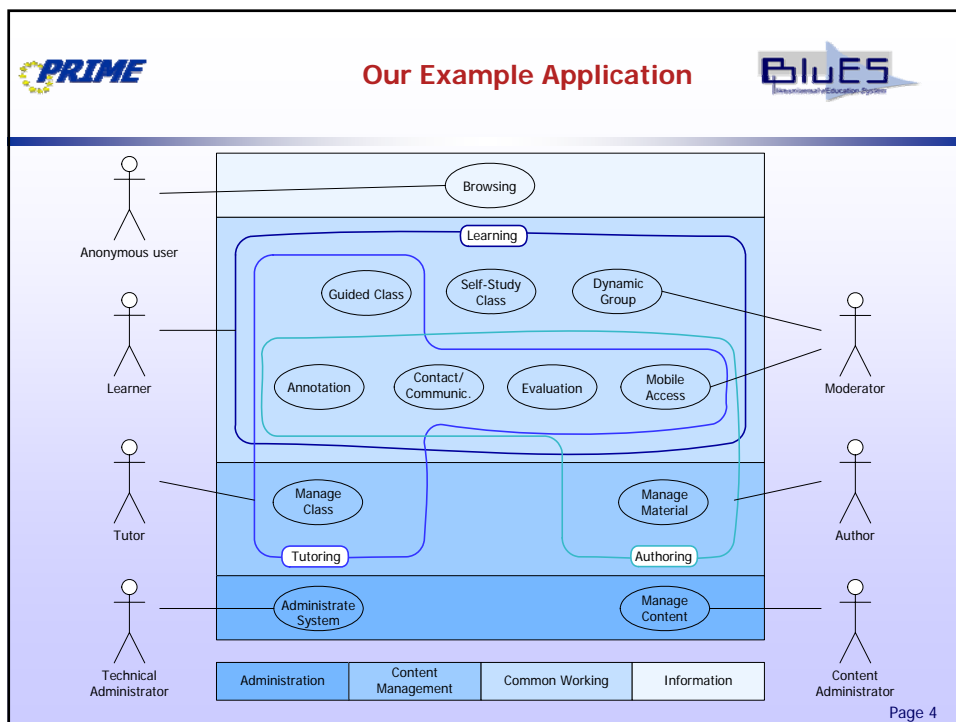
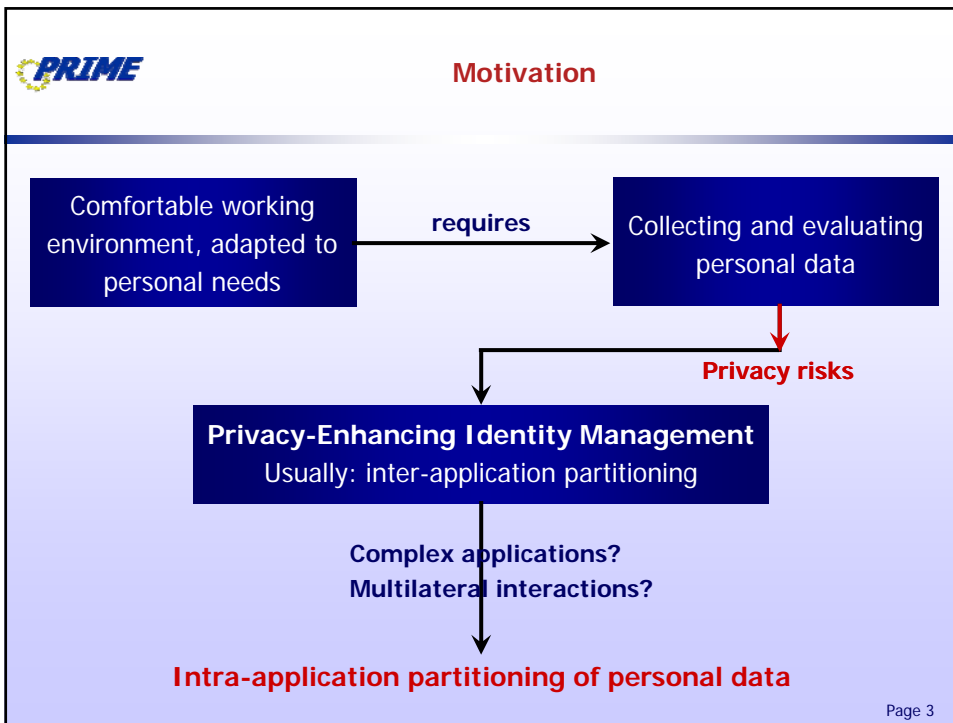
Katrin Borcea, Hilko Donker, Elke Franz,
Katja Liesebach, Andreas Pfitzmann, and Hagen Wahrig

{borcea|donker|ef1|liesebach|pfitza|wahrig}@inf.tu-dresden.de

**PEP 2005
Workshop on Privacy-Enhanced Personalization
UM 2005**

Edinburgh, UK, July 25, 2005

- **Motivation**
- **Our Example Application**
- **Contexts and Context Switches**
- **Handling Context Switches**
- **Summary and Outlook**



Context in general

any information that describes current situation of an entity – considering information that is relevant for application

Our goals

- Enable users to control who knows what about them
- Establish various partial identities within an application by means of contexts

Relevant aspects

- Current context within application
- Information that allow to assess linkability of his actions for other users

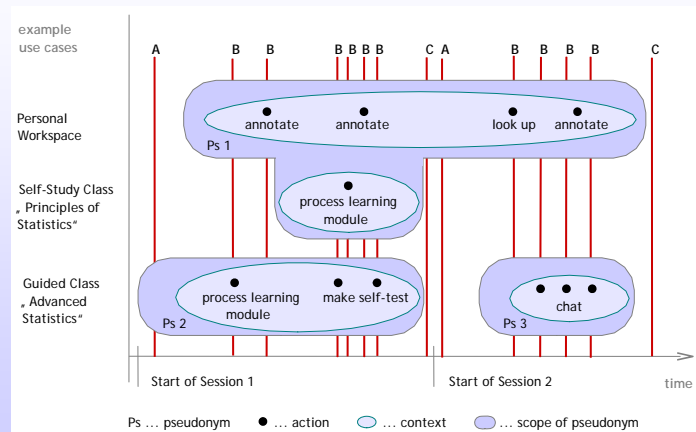
Context

- Specific situation in which a user works to perform a task
- History of former actions if working on this task

Context switch

- User starts working on another task
- Implies not necessarily switch to another (possibly new) partial identity
- Visible action – atomic context switch → atomic contexts
- Required: reasonable aggregation of atomic contexts

Handling Context Switches



A...prospective approach B...collateral approach C...retrospective approach

Necessary: combination of these three concepts

Summary and Outlook

- Preserve privacy despite the need to collect and evaluate information about users to provide them a personalized application: intra-application partitioning of personal data
- Partitioning based on contexts considering current task as well as former activities
- Application must support this partitioning
- Flexible configuration of context switches
- Deliver pre-configurations in order to support users
- Context switches in multilateral scenarios
- Visualization of linkability
- Realization and practical tests